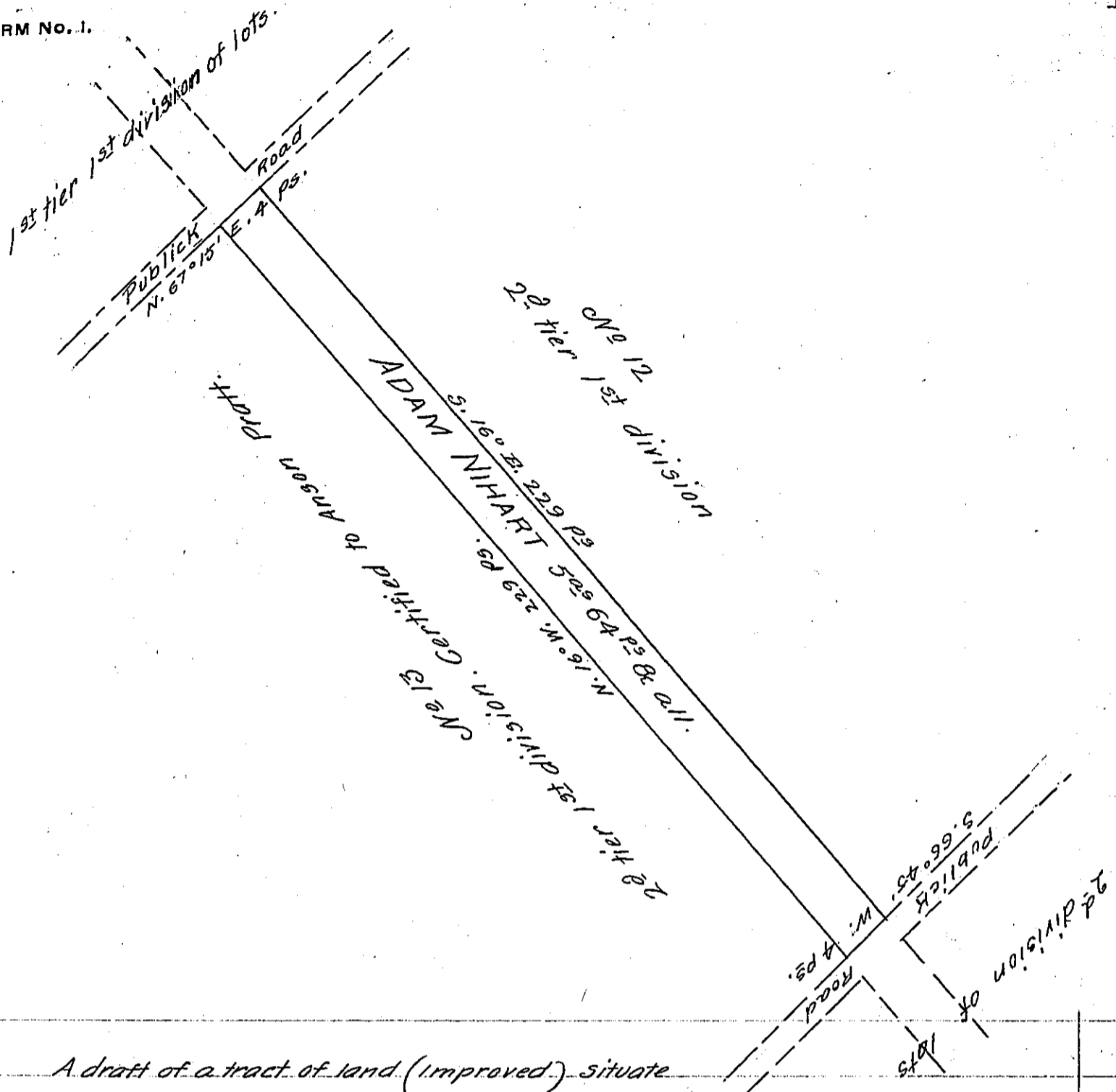


FORM NO. 1.



A draft of a tract of land (Improved) situate between and adjoining lots No 12 & 13 in the second tier of the first division of Newport one of the Seventeen Certified townships in Luzerne County containing five acres sixty four perches and the usual allowance of six per cent.

Surveyed the above tract of land to Adam Nihart on the second day of June A. D. 1855 by virtue of his Warrant dated May 28th 1855.

Henry Colt D. S.

To J. Porter Brawley Esqr.
Surveyor General.

IN TESTIMONY that the above is a copy of the original remaining on file in the Department of Internal Affairs of Pennsylvania, made conformably to an Act of Assembly approved the 16th day of February, 1833, I have hereunto set my Hand and caused the Seal of said Department to be affixed at Harrisburg, this twenty eighth day of March 1906

Isaac D. Brown
Secretary of Internal Affairs.